

SyteLine 7 Data Load Utility Overview

Devrunner's SyteLine 7 Data Load Utility (DLU) is designed to make the process of data conversion much easier and more accurate. DLU uses the native SyteLine 7 architecture to accomplish data transfer from legacy systems into Syteline 7. DLU was designed with "ease of use" in mind and requires/assumes no knowledge of Syteline.

DLU was developed with the following requirements in mind –

1. Input from an ascii file with any printable delimiter. It also supports comment lines in input file to make it more understandable.
2. Use of native SyteLine 7 architecture to accomplish login, validation and saves.
3. Use of Grid view to display mapping information in addition to form level defaults.
4. Allows for custom code to massage the data prior to load. This is useful in cases where input data cannot be adjusted prior to load.
5. Save mapping information in XML format. Saved maps can be loaded back, which can save time for periodic loads.
6. Error messages along with error records are logged for faster correction and reload.
7. Displays progress bar at the bottom to aid in planning.

DLU Version 1 supports the following master tables and transactions:

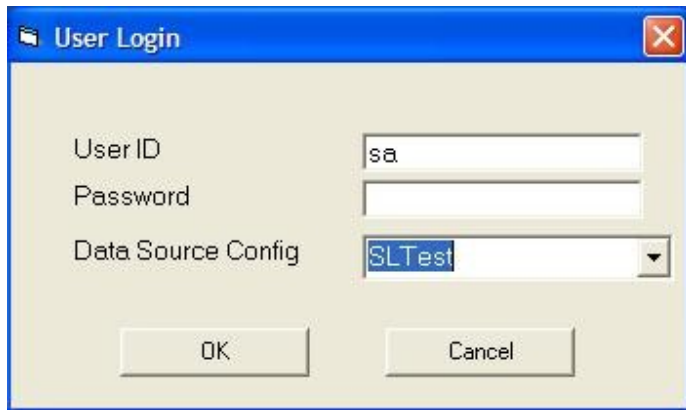
1. Items
2. Customers
3. Vendors
4. Customer Orders
5. Purchase Orders

Additional transactions will be supported in the future versions. These include:

1. Remaining master tables.
2. Jobs
3. Routing
4. BOM
5. AP
6. AR
7. Ledger

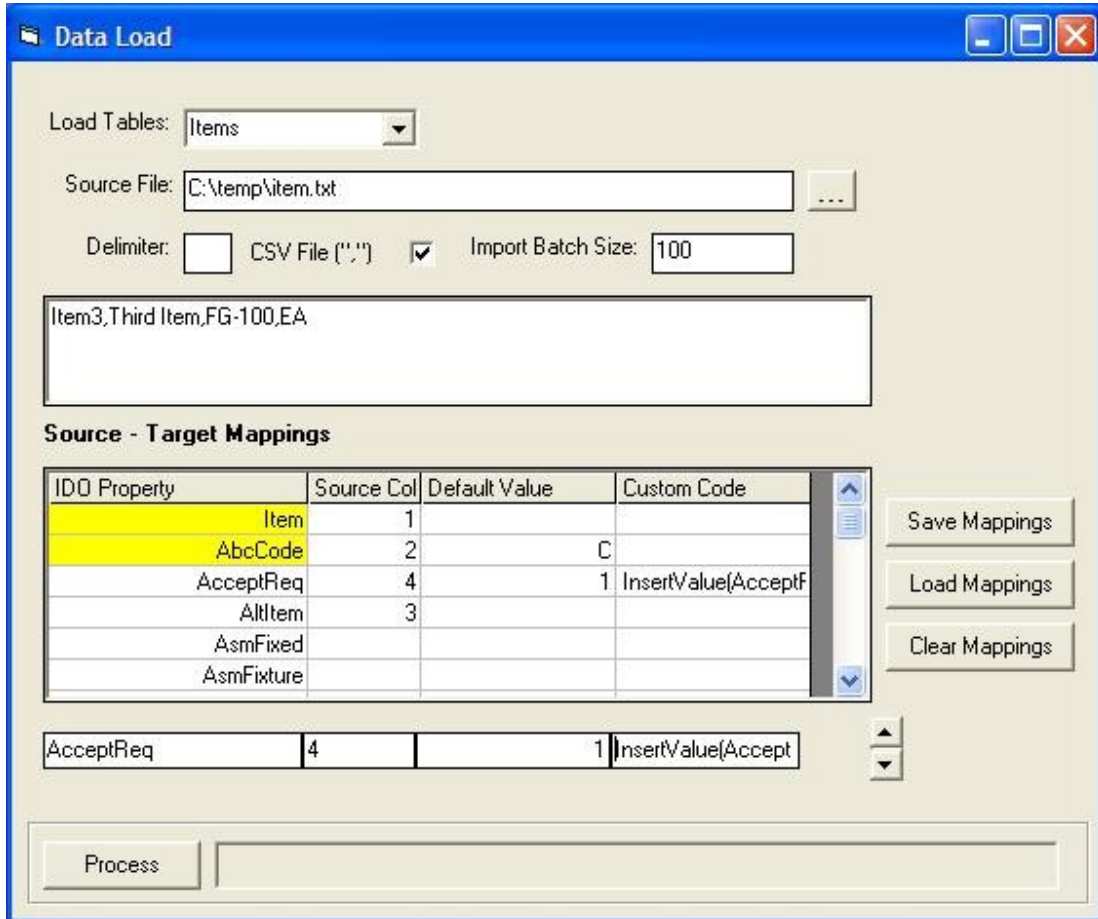
Below are some screen shots of DLU.

Login Screen:



The Login window displays available Syteline configurations on the machine where DLU is being run or on the configured utility server. Username/Password validation takes place just as in SyteLine 7.

Data Load Tool – Main Window



The “Load Tables” dropdown displays the list of master tables and transactions that DLU supports. Selecting a master table will populate the Source-Target Mappings grid with IDO property information along with default values for the ones present.

DLU supports any printable delimiter as well as commonly used CSV format. User has the option of setting the batch size which is set to default to 100.

The main purpose of Source-Target mappings is to map input file columns to IDO properties. To help the user, key and required properties are highlighted with yellow background color. Also default values are provided for properties which can be overridden, if the user so chooses.

The text array at the bottom is used to update each row of the grid and the scroll bar on the text array is tied to the grid above.



The custom code column on the grid supports the following functions to massage input data prior to the load –

- ReplaceValue
- InsertValue
- LowerCase
- UpperCase
- LeftTrim
- RightTrim
- CurrentDate
- CurrentUser

DLU allows mappings to be saved as XML file. This can be loaded in when required. The process button at the bottom starts the data load process while displaying the progress bar on the right.

Performance:

DLU can save a lot of time for the customers over comparable ways of loading data in, especially for large master tables and transactions. Error records are saved separately which makes it easier to correct and reload.

For more information,
Email us at Info1@devrunner.net
Or
Visit our website at www.devrunner.net

DevRunner Ltd.

276 Parkway Blvd
Urbana, OH 43078

Tel (936)652-2088
Fax (614)559-6670
Email info1@devrunner.net